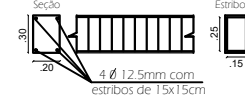
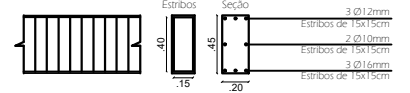


PLANTA DE PILARES E VIGA DE AMARRAÇÃO
Esc: 1/75

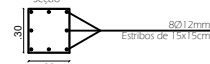
Viga de Fundação



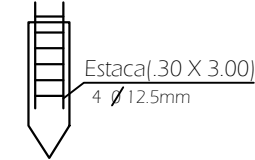
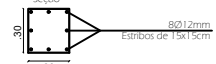
Viga de Amarração



Esataca



Pilar



  <p>PREFEITURA MUNICIPAL DO CHUI</p>	
<h2>CENTRO DE INTEGRAÇÃO COMERCIAL</h2>	
ENDEREÇO: AV. URUGUAI	DATA: Março/2022
DESCRIÇÃO: PLANTA DE PILARES E VIGA DE AMARRAÇÃO	ESCALA: Indicada
RESPONSÁVEL TÉCNICO: Kristie C. Leoneti Eng. Civil CREA 221566	PRANCHA: 07